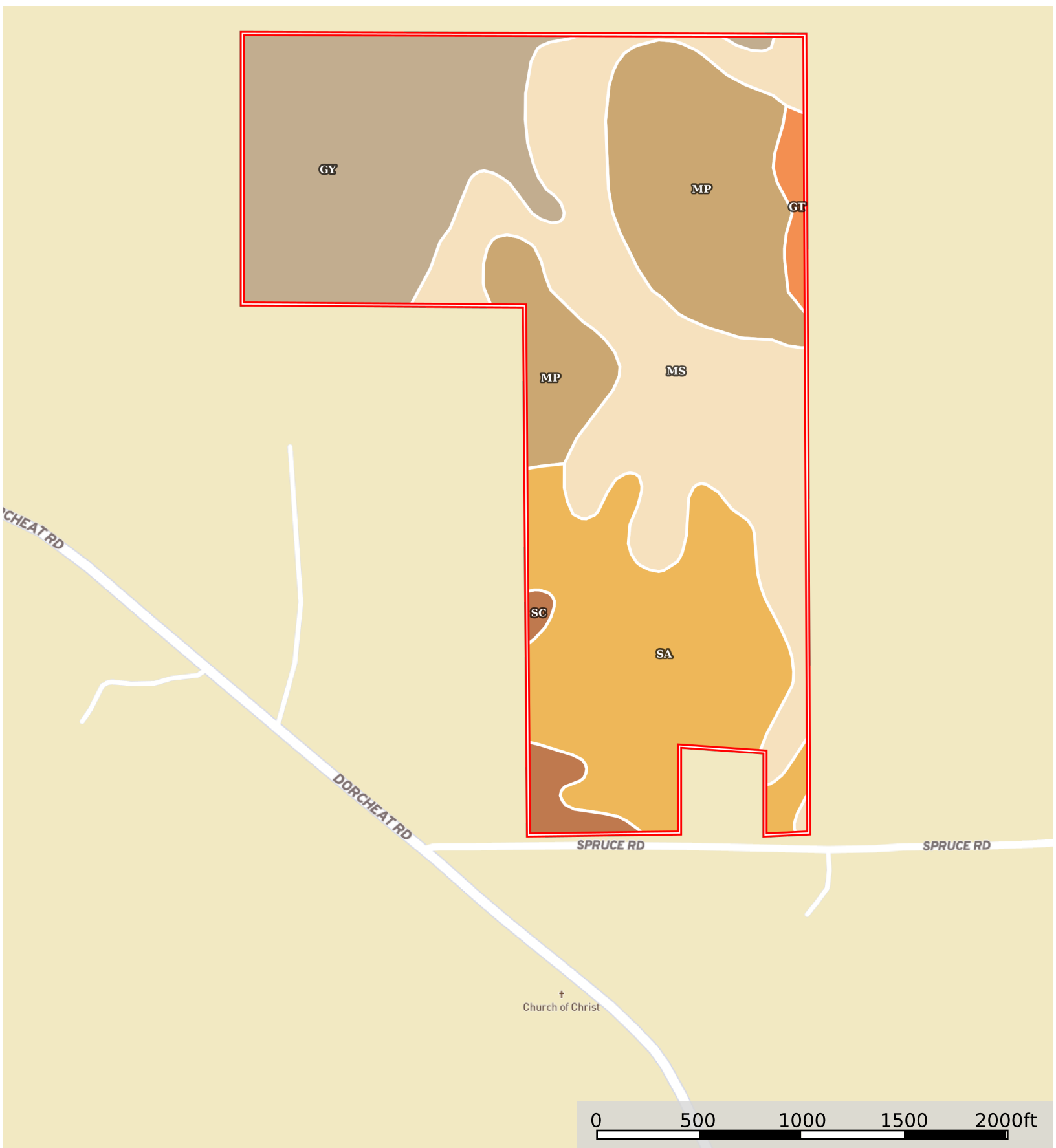



# Dorcheat Road: Tract 2

Webster Parish, Louisiana, 156 AC +/-



 Boundary

|  Boundary 160.48 ac

SOIL CODE	SOIL DESCRIPTION	ACRES	%	CPI	NCCPI	CAP
Ms	Malbis fine sandy loam, 3 to 8 percent slopes	47.71	29.73	0	76	3e
GY	Guyton-Ouachita silt loams, 0 to 1 percent slopes, frequently flooded	37.62	23.44	0	50	5w
Sa	Sacul fine sandy loam, 1 to 5 percent slopes	37.16	23.16	0	65	4e
Mp	Malbis fine sandy loam, 1 to 3 percent slopes	32.24	20.09	0	75	2e
SC	Sacul fine sandy loam, 5 to 12 percent slopes	3.39	2.11	0	75	6e
Gt	Gurdon silt loam, 1 to 3 percent slopes	2.36	1.47	0	77	2e
TOTALS		160.48(*)	100%	-	67.15	3.55

(\*) Total acres may differ in the second decimal compared to the sum of each acreage soil. This is due to a round error because we only show the acres of each soil with two decimal.

