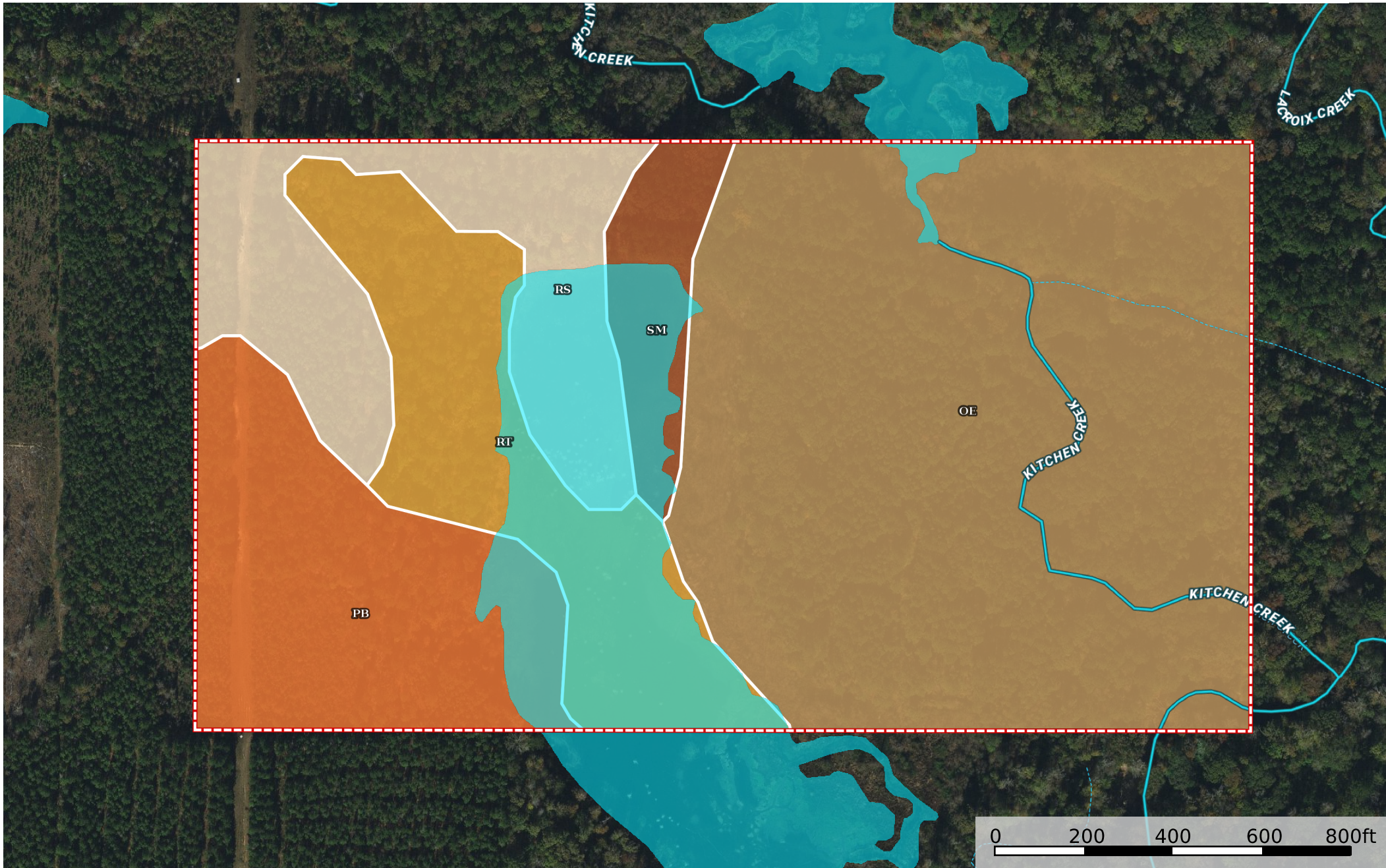


Kitchen Creek Tract

La Salle Parish, Louisiana, 63 AC +/-



- Boundary
- Stream, Intermittent
- River/Creek
- Water Body

|  Boundary 72.0 ac

SOIL CODE	SOIL DESCRIPTION	ACRES	%	CPI	NCCPI	CAP
OE	Ouachita and jena soils, frequently flooded	37.53	52.12	0	60	4w
Pb	Pheba loam	11.37	15.79	0	42	3w
Rt	Ruston fine sandy loam, 3 to 8 percent slopes	10.16	14.11	0	70	3e
Rs	Ruston fine sandy loam, 1 to 3 percent slopes	9.83	13.65	0	72	2e
Sm	Smithdale fine sandy loam, 12 to 30 percent slopes	3.11	4.32	0	47	7e
TOTALS		72.01(*)	100%	-	59.64	3.56

(*) Total acres may differ in the second decimal compared to the sum of each acreage soil. This is due to a round error because we only show the acres of each soil with two decimal.

Capability Legend

Increased Limitations and Hazards

Decreased Adaptability and Freedom of Choice Users

Land, Capability

	1	2	3	4	5	6	7	8
'Wild Life'	•	•	•	•	•	•	•	•
Forestry	•	•	•	•	•	•	•	
Limited	•	•	•	•	•	•	•	
Moderate	•	•	•	•	•	•		
Intense	•	•	•	•	•			
Limited	•	•	•	•				
Moderate	•	•	•					
Intense	•	•						
Very Intense	•							

Grazing Cultivation

(c) climatic limitations (e) susceptibility to erosion

(s) soil limitations within the rooting zone (w) excess of water