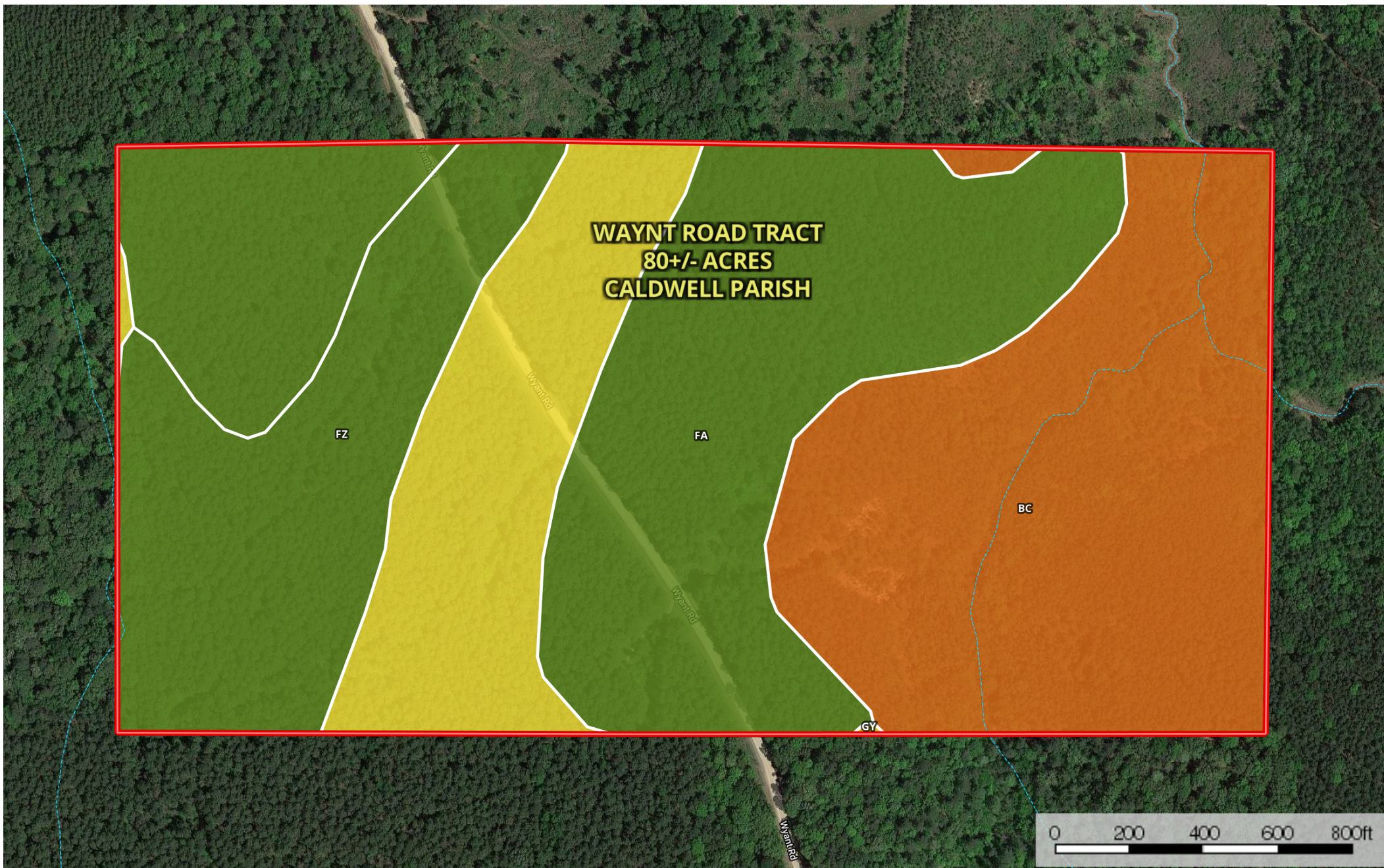


Wyant Road Tract

Caldwell Parish, Louisiana, 80 AC +/-



- Boundary
- Stream, Intermittent
- River/Creek
- Water Body

|  Boundary 81.0 ac









SOIL CODE	SOIL DESCRIPTION	ACRES	%	CAP
Bc	Bayoudan clay, 8 to 40 percent slopes	25.4	31.36	7e
FZ	Frizzell-Guyton-Providence association, 0 to 2 percent slopes	14.3	17.71	2e
Fa	Falkner silt loam	29.3	36.13	2w
GY	Guyton and Ouachita silt loams, frequently flooded	12.0	14.81	5w
TOTALS		81.0	100%	4.01

Capability Legend

Increased Limitations and Hazards

Decreased Adaptability and Freedom of Choice Users

Land, Capability

								
	1	2	3	4	5	6	7	8
'Wild Life'	•	•	•	•	•	•	•	•
Forestry	•	•	•	•	•	•	•	
Limited	•	•	•	•	•	•	•	
Moderate	•	•	•	•	•	•		
Intense	•	•	•	•	•			
Limited	•	•	•	•				
Moderate	•	•	•					
Intense	•	•						
Very Intense	•							

Grazing Cultivation

(c) climatic limitations (e) susceptibility to erosion

(s) soil limitations within the rooting zone (w) excess of water