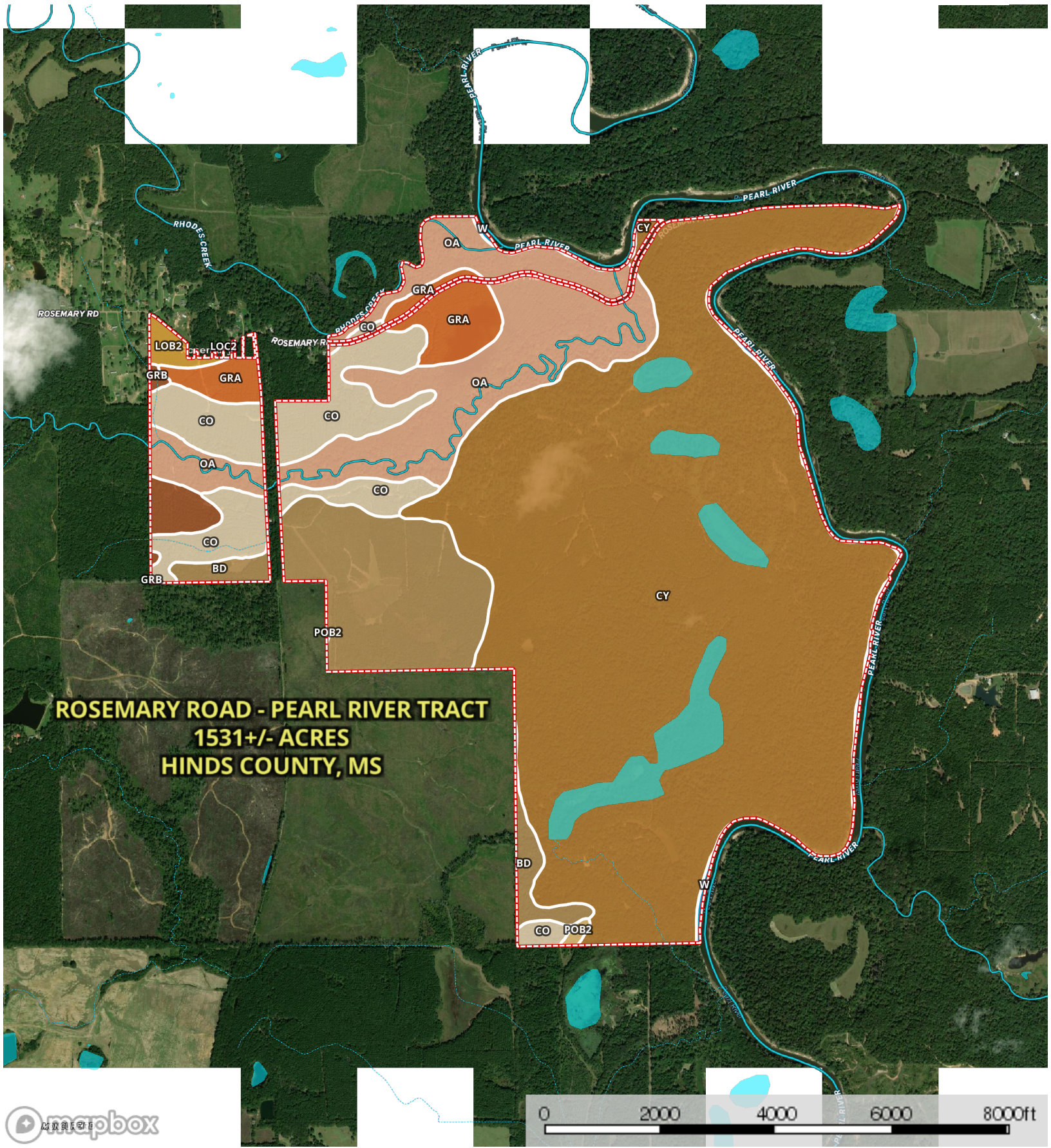


Rosemary Road - Pearl River Tract

Hinds County, Mississippi, 1530 AC +/-




ROSEMARY ROAD - PEARL RIVER TRACT
1531+/- ACRES
HINDS COUNTY, MS


- Stream, Intermittent
- River/Creek
- Water Body

|  All Polygons 1576.0 ac

SOIL CODE	SOIL DESCRIPTION	ACRES	%	CAP
BD	Bonn-Deerford association	160.2	10.16	5w
GrA	Grenada silt loam, 0 to 2 percent slopes	49.8	3.16	2e
Co	Calloway silt loam	130.6	8.28	2e
LoB2	Loring silt loam, 2 to 5 percent slopes, moderately eroded, central	8.8	0.56	3e
GrB	Grenada silt loam, 2 to 5 percent slopes	17.3	1.1	2e
LoC2	Loring silt loam, 5 to 8 percent slopes, moderately eroded, central	0.3	0.02	4e
Oa	Oaklimeter silt loam, 0 to 2 percent slopes, occasionally flooded, north	208.0	13.2	2w
W	Water	7.8	0.5	-
PoB2	Providence silt loam, 2 to 5 percent slopes, eroded	2.3	0.14	2e
CY	Cascilla-Chenneby association	990.9	62.88	4w
TOTALS		1576.0	100%	3.56

|  133.3 ac

SOIL CODE	SOIL DESCRIPTION	ACRES	%	CAP
BD	Bonn-Deerford association	10.8	8.13	5w
GrA	Grenada silt loam, 0 to 2 percent slopes	16.1	12.07	2e
Co	Calloway silt loam	57.8	43.33	2e
LoB2	Loring silt loam, 2 to 5 percent slopes, moderately eroded, central	8.8	6.64	3e
GrB	Grenada silt loam, 2 to 5 percent slopes	17.3	12.98	2e
LoC2	Loring silt loam, 5 to 8 percent slopes, moderately eroded, central	0.3	0.24	4e
Oa	Oaklimeter silt loam, 0 to 2 percent slopes, occasionally flooded, north	22.1	16.6	2w
TOTALS		133.3	100%	2.32

|  1388.0 ac

SOIL CODE	SOIL DESCRIPTION	ACRES	%	CAP
W	Water	6.5	0.47	-
Co	Calloway silt loam	71.5	5.15	2e
PoB2	Providence silt loam, 2 to 5 percent slopes, eroded	2.3	0.16	2e
CY	Cascilla-Chenneby association	988.4	71.21	4w
GrA	Grenada silt loam, 0 to 2 percent slopes	28.2	2.03	2e
BD	Bonn-Deerford association	149.3	10.76	5w
Oa	Oaklimeter silt loam, 0 to 2 percent slopes, occasionally flooded, north	141.8	10.22	2w
TOTALS		1388.0	100%	3.74



54.7 ac

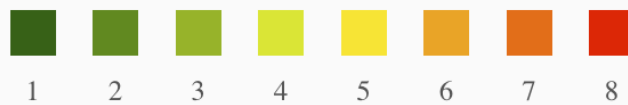
SOIL CODE	SOIL DESCRIPTION	ACRES	%	CAP
W	Water	1.4	2.51	-
CY	Cascilla-Chenneby association	2.5	4.52	4w
GrA	Grenada silt loam, 0 to 2 percent slopes	5.5	10.06	2e
Co	Calloway silt loam	1.3	2.36	2e
Oa	Oaklimer silt loam, 0 to 2 percent slopes, occasionally flooded, north	44.0	80.55	2w
TOTALS		54.7	100%	2.04

Capability Legend

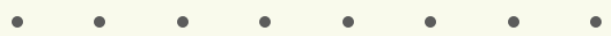
Increased Limitations and Hazards

Decreased Adaptability and Freedom of Choice Users

Land, Capability



'Wild Life'



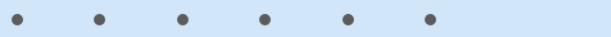
Forestry



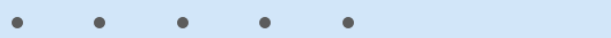
Limited



Moderate



Intense



Limited



Moderate



Intense



Very Intense



Grazing Cultivation

(c) climatic limitations (e) susceptibility to erosion

(s) soil limitations within the rooting zone (w) excess of water