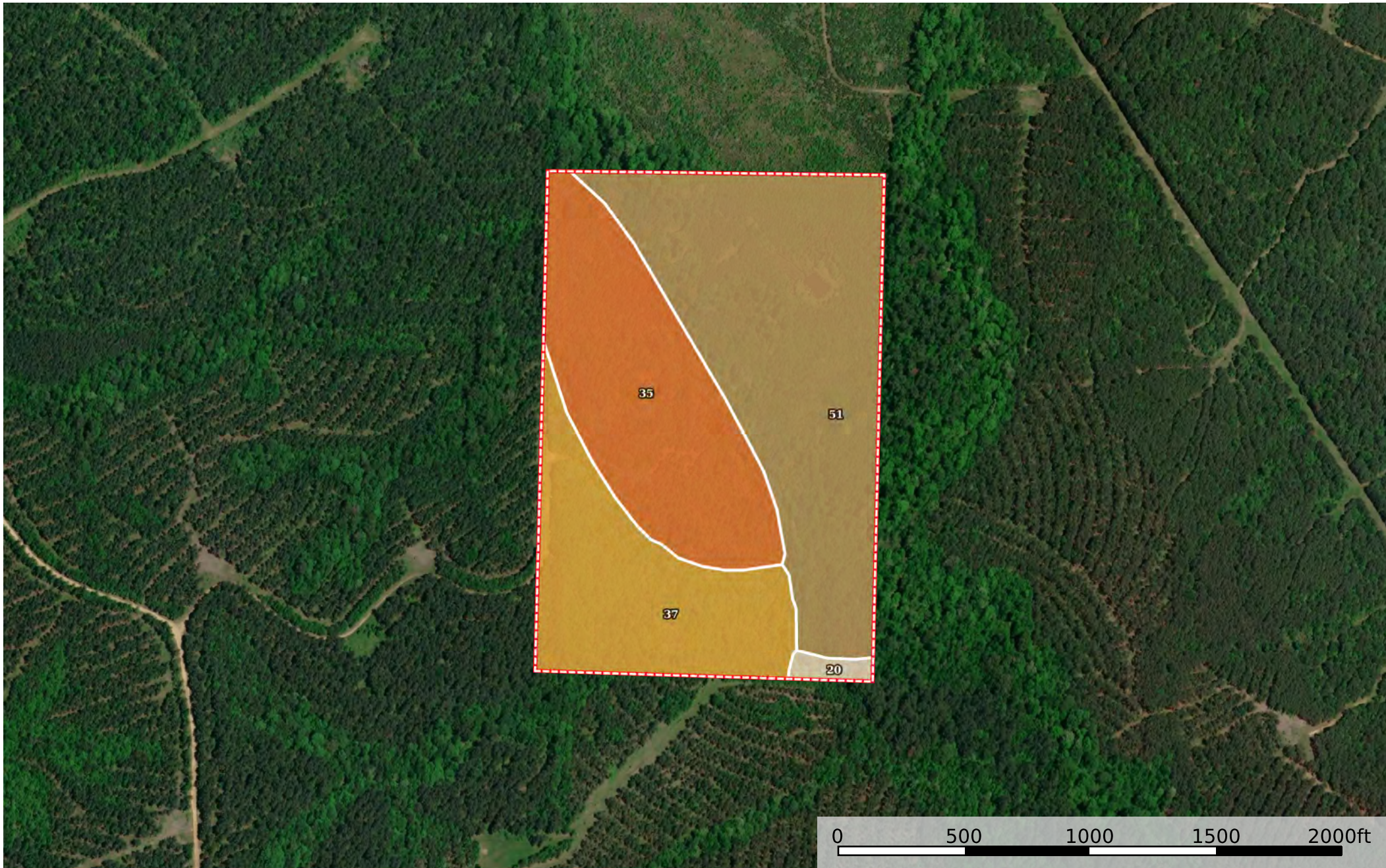



Washington Sportsman 60

Hempstead County, Arkansas, 60 AC +/-



 Boundary

|  Boundary 61.2 ac

| SOIL CODE | SOIL DESCRIPTION | ACRES | % | CPI | NCCPI | CAP |
|-----------|--|---------|-------|-----|-------|-----|
| 51 | Tuscumbia clay, occasionally flooded | 27.85 | 45.51 | 0 | 56 | 3w |
| 35 | Sacul fine sandy loam, 3 to 8 percent slopes | 18.1 | 29.58 | 0 | 76 | 4e |
| 37 | Sacul-Kirvin association, rolling | 14.55 | 23.78 | 0 | 65 | 6e |
| 20 | Marietta loam, occasionally flooded | 0.7 | 1.14 | 0 | 77 | 2w |
| TOTALS | | 61.2(*) | 100% | - | 64.31 | 4.0 |

(*) Total acres may differ in the second decimal compared to the sum of each acreage soil. This is due to a round error because we only show the acres of each soil with two decimal.

