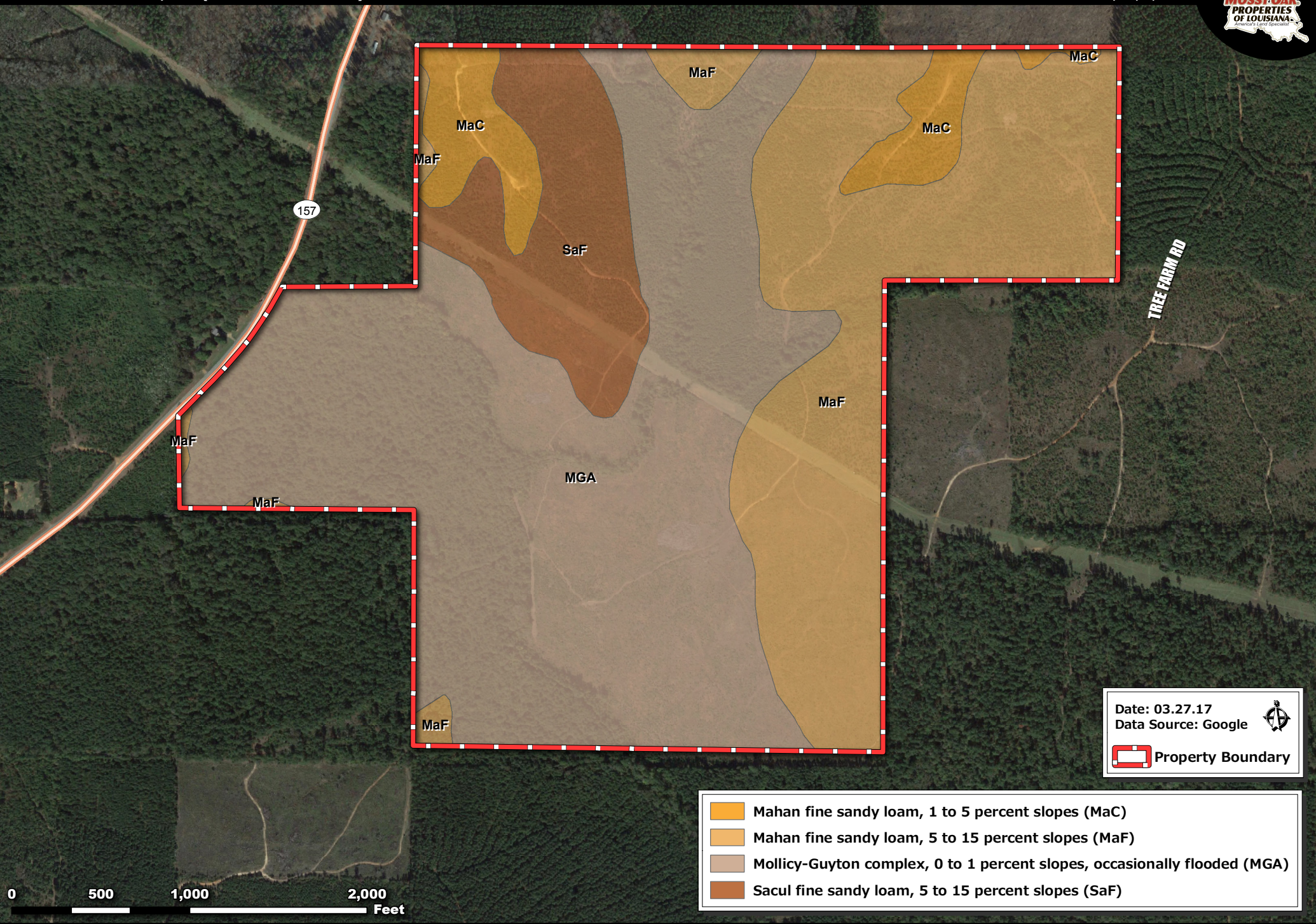


HALL PLACE - 316 AC +/-  
BOSSIER PARISH, LA (SOIL OVERVIEW)



Date: 03.27.17  
Data Source: Google  
Property Boundary

- Mahan fine sandy loam, 1 to 5 percent slopes (MaC)
- Mahan fine sandy loam, 5 to 15 percent slopes (MaF)
- Mollicy-Guyton complex, 0 to 1 percent slopes, occasionally flooded (MGA)
- Sacul fine sandy loam, 5 to 15 percent slopes (SaF)