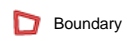
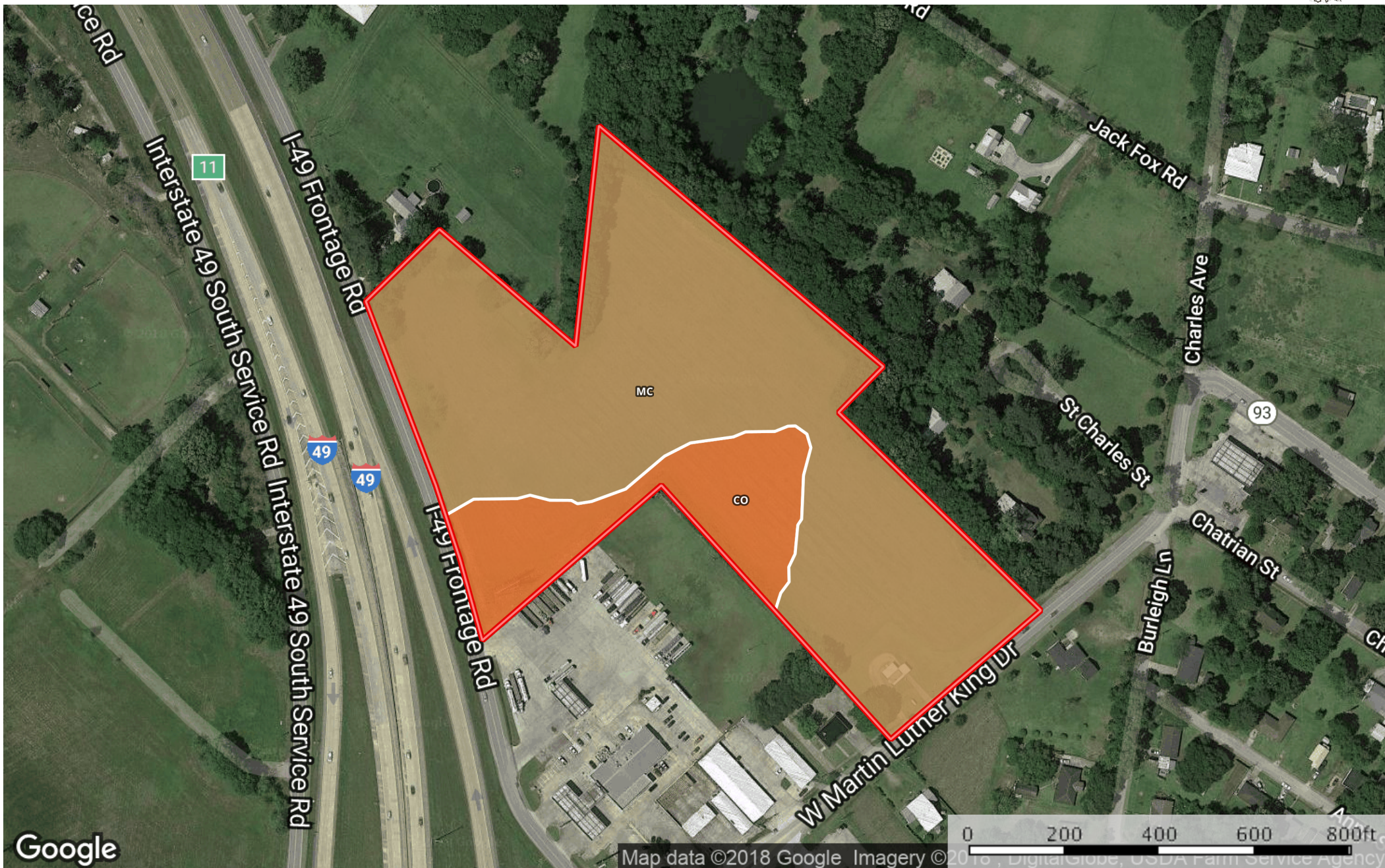




I-49 Grand Coteau Tract, St. Landry Parish, 13.44 Acres +/-
St. Landry Parish, Louisiana, 13.44 AC +/-



Boundary

|  Boundary 13.2 ac

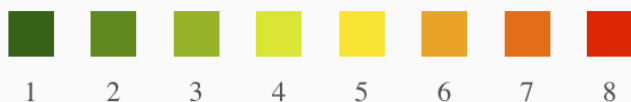
SOIL CODE	SOIL DESCRIPTION	ACRES	%	CAP
Mc	Memphis silt loam, 0 to 1 percent slopes	10.9	82.15	1
Co	Coteau silt loam, 0 to 1 percent slopes	2.4	17.85	2w
TOTALS		13.2	100%	1.18

Capability Legend

Increased Limitations and Hazards

Decreased Adaptability and Freedom of Choice Users

Land, Capability
Class(non-irrigated)



'Wild Life'	•	•	•	•	•	•	•	•
Forestry	•	•	•	•	•	•	•	
Limited	•	•	•	•	•	•	•	
Moderate	•	•	•	•	•	•		
Intense	•	•	•	•	•			
Limited	•	•	•	•				
Moderate	•	•	•					
Intense	•	•						
Very Intense	•							

Grazing Cultivation

(c) climatic limitations (e) susceptibility to erosion

(s) soil limitations within the rooting zone (w) excess of water